

I.C.H.515 SEC.C
SANDUSKY COUNTY



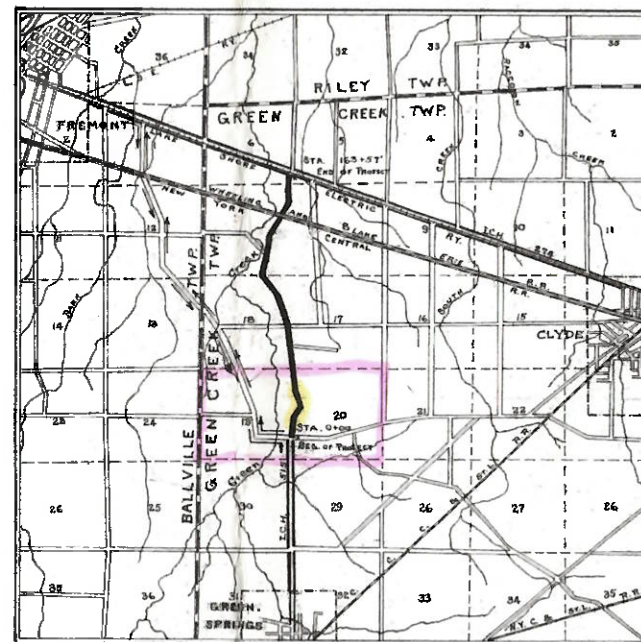
STATE OF OHIO
DEPARTMENT OF HIGHWAYS AND PUBLIC WORKS
DIVISION OF HIGHWAYS
BUREAU OF CONSTRUCTION
FREMONT-REPUBLIC ROAD
I.C.H. 515 SEC.C PET.NO. 5308
SANDUSKY COUNTY
GREEN CREEK TWP. JAN. 1926

INDEX

Title Page	p. 1
Typical Cross Section	p. 2
Plans and Profile	p. 3-8
Cross Sections	p. 9-17
Summary	p. 18

CONVENTIONAL SIGNS

Township Line	-----
Section Line	-----
Property Line not fenced	-----
Center Line	-----
City or Village Line	-----
Fence	-----
Telephone or Telegraph	> > > >
Steam Railroad	=====
Electric Line	-----



LOCATION PLAN



PORTION TO BE IMPROVED
DETOURS SHOWN THUS

SCALES

Plan - 1" = 100' Profile (Vertical) 1" = 10'
Cross Sections 1" = 5' Profile (Horizontal) 1" = 100'

The Standard Specifications of the State of Ohio - Division of Highways - in force on date of contract will govern this improvement.

I hereby approve these plans and declare that the making of this improvement will require the closing to traffic of the highway and that detours will be provided as shown on the plan.

Approved
Date 1-26-1926

L. H. Wismar
Resident Engineer

Approved
Date 2-15-1926

W. J. Hunsaker
Division Engineer

Approved
Date 3-27-1926

Harry S. Cook
State Highway Engineer

Approved
Date 3-28-1926

H. T. Schlesinger
Director of Highways and Public Works

We, the Commissioners of Sandusky County hereby approve these plans and certify that the right-of-way of 60 ft is available for the construction, maintenance and repair of the above highway.

Geo. A. Hiedt
W. H. Kelle
R. M. Rogers

Date JAN. 23 1926.

County Commissioners

CONSTRUCTION
BUREAU
JUL 13 1955
GROUND PHOTO LAB

I.C.H. 515 SEC. C
SANDUSKY COUNTY3
18

At Sta. 0+00 Set I.P. on E. N end I.C.H. 515 Sec. B

Elec. Pole N.E. 275' Tel. Pole N.W. 575' T.P. S.W. 454'

NOTE: SLM 2.20 FOR SR 19 & CR 192/CR 197
INTERSECTION.

2.20 x 5280 = 11616 OR 116+16.00

At Sta. 8+70.8 Set I.P. on E.
Tel. Pole S.W. 29.5' Elec. Pole N.E. 510'
Set Stake 8.0 Right. $\Delta = 0^\circ - 00'$

REF 6B

At Sta. 11+39.97 Set I.P. on P.I.
Set broken crock around I.P.
Apple S.W. 35.0' Apple N.W. 59.9'
 $\Delta = 34^\circ - 16' R$ SEE 2005
PROJECT
23574

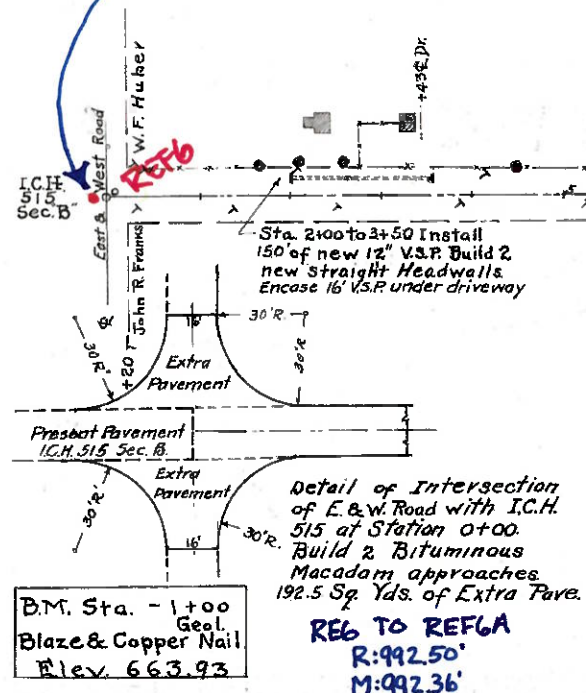
REF 7A

At Sta. 17+68.3 Set I.P. on P.I. top of Bank R.
Elec. Pole N 45.9' Fence Post N 8.7'
Sycamore S (By Culv) 58.0'
 $\Delta = 39^\circ - 13' L$

REF 7B

At Sta. 20+64.35 Set I.P. on P.I. 6' N of Gate R.
Elec. Pole N.E. 41.8' Tel. Pole S. 23.6'
 $\Delta = 17^\circ - 27' L$

REF 7C

At Sta. 26+44.8 Set I.P. on P.I.
S.W. Shed N.E. 29.4' Pole N.W. 11.8'
Elec. Pole E 24.0'
 $\Delta = 20^\circ - 8' R$ 

Station	Left	Right
9+42.50	9.00 657.19	657.34 9.00 657.19
9+67.50	9.00 657.20	657.04 9.00 656.89
9+92.50	9.00 657.28	656.74 11.64 656.84
10+17.50	9.00 657.40	656.44 18.12 656.94
10+42.50	9.00 657.52	656.14 18.80 656.94
11+00	9.00 657.01	655.63 18.80 655.48
11+50	9.00 656.94	655.56 18.80 655.41
12+00	9.00 657.14	655.86 18.80 655.71
12+25.00	9.00 657.80	656.12 18.80 656.97
12+50.00	9.00 657.51	656.55 18.12 656.40
12+75.00	9.00 657.51	656.97 11.60 656.82
13+00.00	9.00 657.53	657.37 9.00 657.22
13+25.00	9.00 657.55	657.70 9.00 657.55
13+50.00	9.00 657.55	657.70 9.00 657.55

Curve Data:
D = 12°
T = 147.41'
L = 285.55'
R = 22'B.M. Sta. 10+56
Spike in Tel. Pole R
Elev. 654.39
REF 7 TO REF 7A
R: 490.84'
M: 490.54'

Station	Left		Right	
	Width	Grade	Width	Grade
16+75.74	9.00	652.34	652.24	9.00
16+70.74	10.50	651.03	651.98	9.00
16+65.74	10.50	651.03	651.98	9.00
16+60.74	10.50	651.03	651.98	9.00
16+55.74	10.50	651.03	651.98	9.00
16+50.74	10.50	651.03	651.98	9.00
16+45.74	10.50	651.03	651.98	9.00
16+40.74	10.50	651.03	651.98	9.00
16+35.74	10.50	651.03	651.98	9.00
16+30.74	10.50	651.03	651.98	9.00
16+25.74	10.50	651.03	651.98	9.00
16+20.74	10.50	651.03	651.98	9.00
16+15.74	10.50	651.03	651.98	9.00
16+10.74	10.50	651.03	651.98	9.00
16+05.74	10.50	651.03	651.98	9.00
16+00.74	10.50	651.03	651.98	9.00
15+95.74	10.50	651.03	651.98	9.00
15+90.74	10.50	651.03	651.98	9.00
15+85.74	10.50	651.03	651.98	9.00
15+80.74	10.50	651.03	651.98	9.00
15+75.74	10.50	651.03	651.98	9.00
15+70.74	10.50	651.03	651.98	9.00
15+65.74	10.50	651.03	651.98	9.00
15+60.74	10.50	651.03	651.98	9.00
15+55.74	10.50	651.03	651.98	9.00
15+50.74	10.50	651.03	651.98	9.00
15+45.74	10.50	651.03	651.98	9.00
15+40.74	10.50	651.03	651.98	9.00
15+35.74	10.50	651.03	651.98	9.00
15+30.74	10.50	651.03	651.98	9.00
15+25.74	10.50	651.03	651.98	9.00
15+20.74	10.50	651.03	651.98	9.00
15+15.74	10.50	651.03	651.98	9.00
15+10.74	10.50	651.03	651.98	9.00
15+05.74	10.50	651.03	651.98	9.00
15+00.74	10.50	651.03	651.98	9.00
14+95.74	10.50	651.03	651.98	9.00
14+90.74	10.50	651.03	651.98	9.00
14+85.74	10.50	651.03	651.98	9.00
14+80.74	10.50	651.03	651.98	9.00
14+75.74	10.50	651.03	651.98	9.00
14+70.74	10.50	651.03	651.98	9.00
14+65.74	10.50	651.03	651.98	9.00
14+60.74	10.50	651.03	651.98	9.00
14+55.74	10.50	651.03	651.98	9.00
14+50.74	10.50	651.03	651.98	9.00
14+45.74	10.50	651.03	651.98	9.00
14+40.74	10.50	651.03	651.98	9.00
14+35.74	10.50	651.03	651.98	9.00
14+30.74	10.50	651.03	651.98	9.00
14+25.74	10.50	651.03	651.98	9.00
14+20.74	10.50	651.03	651.98	9.00
14+15.74	10.50	651.03	651.98	9.00
14+10.74	10.50	651.03	651.98	9.00
14+05.74	10.50	651.03	651.98	9.00
14+00.74	10.50	651.03	651.98	9.00
13+95.74	10.50	651.03	651.98	9.00
13+90.74	10.50	651.03	651.98	9.00
13+85.74	10.50	651.03	651.98	9.00
13+80.74	10.50	651.03	651.98	9.00
13+75.74	10.50	651.03	651.98	9.00
13+70.74	10.50	651.03	651.98	9.00
13+65.74	10.50	651.03	651.98	9.00
13+60.74	10.50	651.03	651.98	9.00
13+55.74	10.50	651.03	651.98	9.00
13+50.74	10.50	651.03	651.98	9.00
13+45.74	10.50	651.03	651.98	9.00
13+40.74	10.50	651.03	651.98	9.00
13+35.74	10.50	651.03	651.98	9.00
13+30.74	10.50	651.03	651.98	9.00
13+25.74	10.50	651.03	651.98	9.00
13+20.74	10.50	651.03	651.98	9.00
13+15.74	10.50	651.03	651.98	9.00
13+10.74	10.50	651.03	651.98	9.00
13+05.74	10.50	651.03	651.98	9.00
13+00.74	10.50	651.03	651.98	9.00
12+95.74	10.50	651.03	651.98	9.00
12+90.74	10.50	651.03	651.98	9.00
12+85.74	10.50	651.03	651.98	9.00
12+80.74	10.50	651.03	651.98	9.00
12+75.74	10.50	651.03	651.98	9.00
12+70.74	10.50	651.03	651.98	9.00
12+65.74	10.50	651.03	651.98	9.00
12+60.74	10.50	651.03	651.98	9.00
12+55.74	10.50	651.03	651.98	9.00
12+50.74	10.50	651.03	651.98	9.00
12+45.74	10.50	651.03	651.98	9.00
12+40.74	10.50	651.03	651.98	9.00
12+35.74	10.50	651.03	651.98	9.00
12+30.74	10.50	651.03	651.98	9.00
12+25.74	10.50	651.03	651.98	9.00
12+20.74	10.50	651.03	651.98	9.00
12+15.74	10.50	651.03	651.98	9.00
12+10.74	10.50	651.03	651.98	9.00
12+05.74	10.50	651.03	651.98	9.00
12+00.74	10.50	651.03	651.98	9.00
11+95.74	10.50	651.03	651.98	9.00
11+90.74	10.50	651.03	651.98	9.00
11+85.74	10.50	651.03	651.98	9.00
11+80.74	10.50	651.03	651.98	9.00
11+75.74	10.50	651.03	651.98	9.00
11+70.74	10.50	651.03	651.98	9.00
11+65.74	10.50	651.03	651.98	9.00
11+60.74	10.50	651.03	651.98	9.00
11+55.74	10.50	651.03	651.98	9.00
11+50.74	10.50	651.03	651.98	9.00
11+45.74	10.50	651.03	651.98	9.00
11+40.74	10.50	651.03	651.98	9.00
11+35.74	10.50	651.03	651.98	9.00
11+30.74	10.50	651.03	651.98	9.00
11+25.74	10.50	651.03	651.98	9.00
11+20.74	10.50	651.03	651.98	9.00
11+15.74	10.50	651.03	651.98	9.00
11+10.74	10.50	651.03	651.98	9.00
11+05.74	10.50	651.03	651.98	9.00
11+00.74	10.50	651.03	651.98	9.00
10+95.74	10.50	651.03	651.98	9.00
10+90.74	10.50	651.03	651.98	9.00
10+85.74	10.50	651.03	651.98	9.00
10+80.74	10.50	651.03	651.98	9.00
10+75.74	10.50	651.03	651.98	9.00
10+70.74	10.50	651.03	651.98	9.00
10+65.74	10.50	651.03	651.98	9.00
10+60.74	10.50	651.03	651.98	9.00
10+55.74	10.50	651.03	651.98	9.00
10+50.74	10.50	651.03	651.98	9.00
10+45.74	10.50	651.03	651.98	9.00
10+40.74	10.50	651.03	651.98	9.00
10+35.74	10.50	651.03	651.98	9.00
10+30.74	10.50	651.03	651.98	9.00
10+25.74	10.50	651.03	651.98	9.00
10+20.74	10.50	651.03	651.98	9.00
10+15.74	10.50	651.03	651.98	9.00
10+10.74	10.50	651.03	651.98	9.00
10+05.74	10.50	651.03	651.98	9.00
10+00.74	10.50	651.03	651.98	9.00
9+95.74	10.50	651.03	651.98	9.00
9+90.74	10.50	651.03	651.98	9.00
9+85.74	10.50	651.03	651.98	9.00
9+80.74	10.50	651.03	651.98	9.00
9+75.74	10.50	651.03	651.98	9.00
9+70.74	10.50	651.03	651.98	9.00
9+65.74	10.50	651.03	651.98	9.00
9+60.74	10.50	651.03	651.98	9.00
9+55.74	10.50	651.03	651.98	9.00
9+50.74	10.50	651.03	651.98	9.00
9+45.74	10.50	651.03	651.98	9.00
9+40.74	10.50	651.03	651.98	9.00
9+35.74	10.50	651.03	651.98	9.00
9+30.74	10.50	651.03	651.98	9.00
9+25.74	10.50	651.03	651.98	9.00
9+20.74	10.50	651.03	651.98	9.00
9+15.74	10.50	651.03	651.98	9.00
9+10.74	10.50	651.03	651.98	9.00
9+05.74	10.50	651.03	651.98	9.00
9+00.74	10.50	651.03	651.98	9.00
8+95.74	10.50	651.03	651.98	9.00
8+90.74	10.50	651.03	651.98	9.00
8+85.74	10.50	651.03	651.98	9.00
8+80.74	10.50	651.03	651.98	9.00
8+75.74	10.50	651.03	651.98	9.00
8+70.74	10.50	651.03	651.98	9.00
8+65.74	10.50	651.03	651.98	9.00
8+60.74	10.50	651.03	651.98	9.00
8+55.74	10.50	651.03	651.98	9.00
8+50.74	10.50	651.03	651.98	9.00
8+45.74	10.50	651.03	651.98	9.00
8+40.74	10.50	651.03	651.98	9.00
8+35.74	10.50	651.03	651.98	9.00
8+30.74	10.50	651.03	651.98	9.00
8+25.74	10.50	651.03	651.98	9.00
8+20.74	10.50	651.03	651.98	9.00
8+15.74	10.50	651.03	651.98	9.00
8+10.74	10.50	651.03	651.98	9.00
8+05.74	10.50	651.03	651.98	9.00
8+00.74	10.50	651.03	651.98	9.00
7+95.74	10.50	651.03	651.98	9.00
7+90.74	10.50	651.03	651.98	9.00
7+85.74	10.50	651.03	651.98	9.00
7+80.74	10.50	651.03	651.98	9.00
7+75.74	10.50	651.03	651.98	9.00
7+70.74	10.50	651.03	651.98	9.00
7+65.74	10.50	651.03	651.98	9.00
7+60.74	10.50	651.03	651.98	9.00
7+55.74	10.50	651.03	651.98	9.00
7+50.74	10.50	651.03	651.98	9.00
7+45.74	10.50	651.03	651.98	9.00
7+40.74	10.50	651.03	651.98	9.00
7+35.74	10.50	651.03	651.98	9.00
7+30.74	10.50	651.03	651.98	9.00
7+25.74	10.50	651.03	651.98	9.00
7+20.74	10.50	651.03	651.98	9.00
7+15.74	10.50	651.03	651.98	9.00
7+10.74	10.50	651.03	651.98	9.00
7+05.74	10.50	651.03	651.98	9.00
7+00.74	10.50	651.03	651.98	9.00
6+95.74	10.50	651.03	651.98	9.00
6+90.74	10.50	651.03	651.98	9.00
6+85.74	10.50	651.03	651.98	9.00
6+80.74	10.50	651.03	651.98	9.00
6+75.74	10.50	651.03	651.98	9.00
6+70.74	10.50	651.03	651.98	9.00
6+65.74	10.50	651.03	651.98	9.00
6+60.74	10.50	651.03	651.98	9.00
6+55.74	10.50	651.03	651.98	9.00
6+50.74	10.50	651.03	651.98	9.00
6+45.74	10.50	651.03	651.98	9.00
6+40.74	10.50	651.03	651.98	9.00
6+35.74	10.50	651.03	651.98	9.00
6+30.74	10.50	651.03	651.98	9.00
6+25.74	10.50	651.03	651.98	9.00
6+20.74	10.50	651.03	651.98	9.00
6+15.74	10.50	651.03	651.98	9.00
6+10.74	10.50	651.03	651.98	

I.C.H.515 SEC.C
SANDUSKY COUNTY

REF8
At Sta. 41+12.9 Set I.P. on Sec. Line
Elec. Pole SW 260' Walnut N.W. 51.0' Anchor Post E 25.0'
 $\Delta = 2^\circ - 26' R$

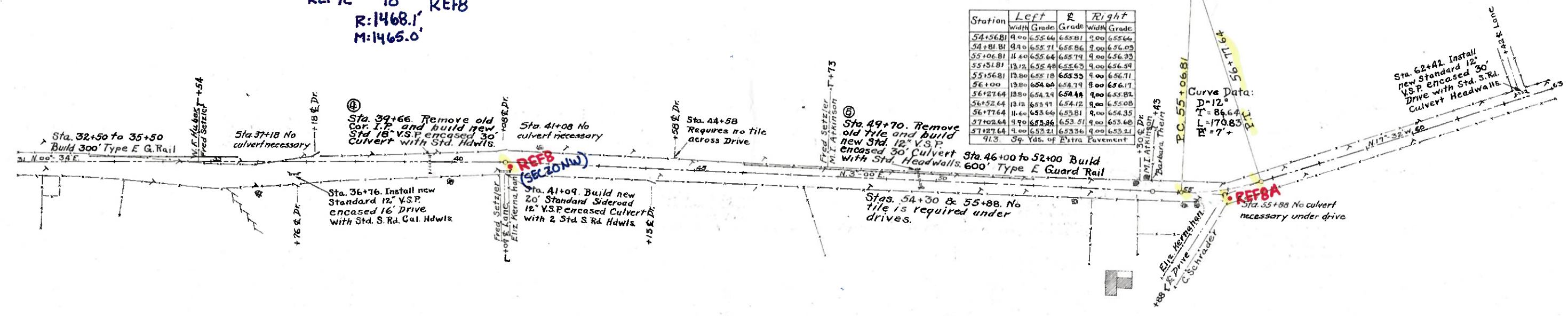
At Sta. 54+42.67 Set Stake on E.
Elec. Pole W. 33.2' 36' Walnut SW 35.7'
Post Picket Fence SE 32.85

At Sta. 55+93.45 Set I.P. on P.I.
Elec. Pole W 22.9' Guy Pole E 20.4'
Tel. Pole S. 58.7' $\Delta = 20^\circ - 32' L$

REF7C TO REF8
R:1468.1'
M:1465.0'

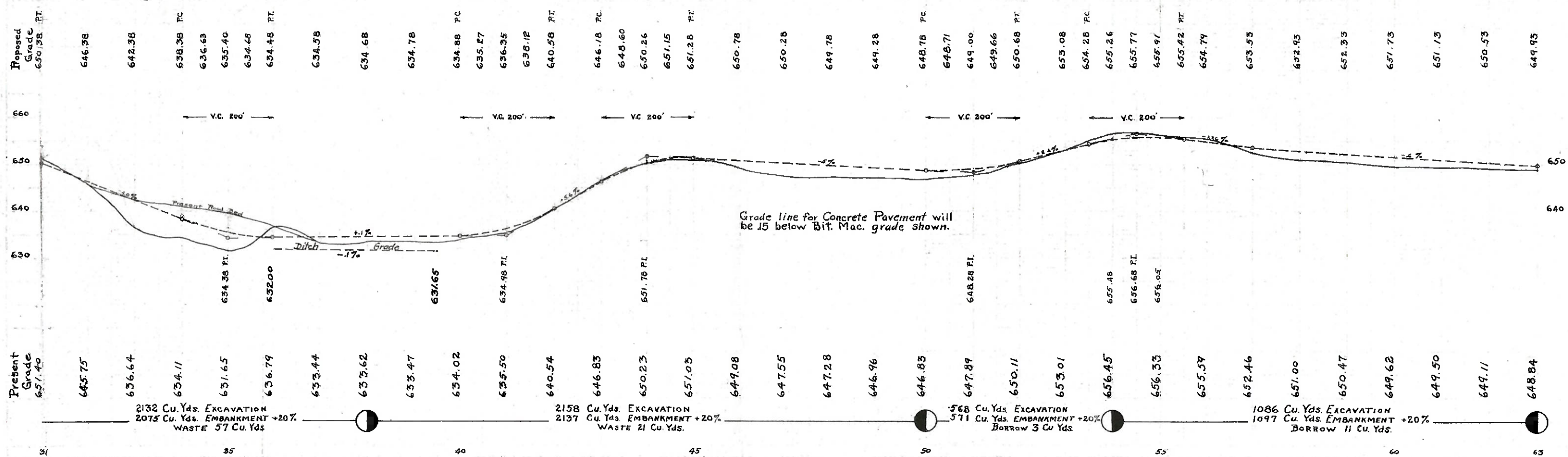
Station	Left	Right
	Width	Grade
54+56.81	9.00	655.66
54+81.81	9.00	655.71
55+06.81	11.60	655.64
55+31.81	13.12	655.48
55+56.81	13.80	655.18
56+00	13.80	654.64
56+27.64	13.80	654.14
56+52.64	13.12	653.91
56+77.64	11.60	653.66
57+02.64	9.90	653.26
57+27.64	9.00	652.21
91.3	59. Yds. of Extra Pavement	

Curve Data:
D=12'
T=86.64'
L=170.83'
PI=7'



B.M. Sta. 41+65
Spike in Walnut L.
Elev. 637.45

B.M. Sta. 54+06
Spike in Walnut L.
Elev. 658.03



I.C.H.515 SEC.C
SANDUSKY COUNTY

518

At Sta. 68+35.35 Set Dry Cell Battery
with Stake on E. Cross Road E & W
Elec. Pole N.W. 26.6' Tel. Pole N.E. 36.5'
Anchor Post S.E. 32.4' Anchor Post S.W. 24.4'
 $\Delta = 9^{\circ} 40' R$

At Sta. 76+70.75 Set Steel Drag tooth on P.I.
Elec. Pole N.W. 37.3' Tel. Pole N 86.3'
Detail of Intersection $\Delta = 13^{\circ} 18' L$
of E. & W. Road with I.C.H.
515 at Sta. 68+32.
Build 2 Bituminous Mac.
Approaches 50' long
and 16' wide.
22.18 Sq. Yds. Ex. Pavement.

Curve Data:
D = 2°
T = 334.02
L = 665.00
E = 19'

At Sta. 86+73.65 Set I.P. on P.I.
Elec. Pole W 28.1' Anchor Post S.E. 16.8'
S.W. Windmill E 41.8' Tree N.E. 50.3'
 $\Delta = 11^{\circ} 58' L$

Curve Data:
D = 2° 30'
T = 240.75
L = 476.40
E = 12'

At Sta. 94+10.1 Set I.P. on P.I.
30' Maple N.W. 22.5' 12' Maple S.W. 17.3'
Elec. Pole N.E. 65.5'
 $\Delta = 7^{\circ} 41' R$

Curve Data:
D = 8°
T = 48.04
L = 96.00
E = 1.5'

Sta. 63+38. Install new
Standard 12" V.S.P. encased
16" Drive with Std. S. Rd.
Culvert Headwalls.

Sta. 63+50. Take up
old 8" tile and build
new Std. 12" V.S.P. encased
36" Culvert with two Std.
Nº1 Catch Basins at ends.
Connect outlet tile into C.B.

Curve Data:
D = 4°
T = 121.30'
L = 241.67'
E = 5.12'

B.M. Sta. 66+51
Spine in Tel. Pole R
Elev. 650.02

Sta. 68+32 install 30" of 6" V.S.P.
encased under side road also 200'
of 6" tile, connect into present tile
and build 1 Std. Nº1 Catch Basin

Sta. 73+03. Install
new Std. 12" V.S.P.
encased 16" Drive with
Std. S. Rd. Cul. Hdws.

Sta. 74+39. Install
new Std. 12" V.S.P.
encased 16" Drive with
Std. S. Rd. Cul. Hdws.

Sta. 79+55. Install new 12" V.S.P.
encased 16" Drive with
Standard Sideroad
Culvert Headwalls.

Sta. 83+00 Install 36" of 6" V.S.P.
encased also 200' of 6" tile
connect same into present tile
and build two Std. Nº1 Catch B.

Sta. 81+75 Install new
Std. 12" V.S.P. encased
16" Drive with Std.
Sideroad Culvert Hdws.

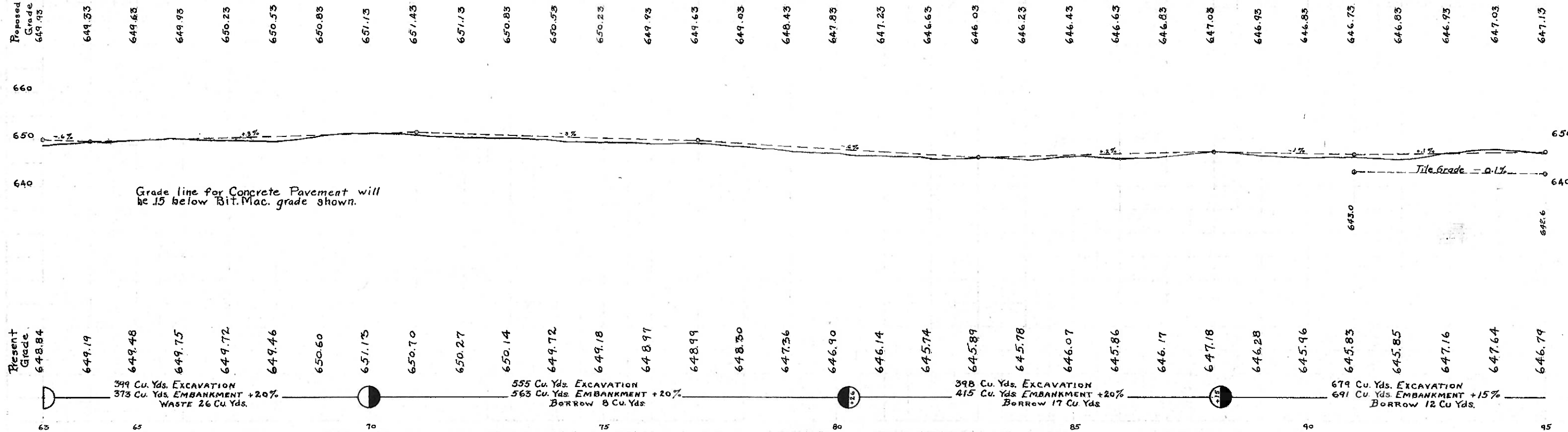
Sta. 87+00
No Tile
required
under Drive

Sta. 91+00 Install 30" of 6" V.S.P. encased
Geo. E. Sommers
Build two Std. Nº1 C.B. also install 1540'
of 6" tile sta. 91 to Sta. 106+40 on East side Rd.

Sta. 92+70
No Tile required
under Drive

Station	Left	Right
93+14.1	9.00 646.74	9.00 646.74
93+58.1	9.00 647.11	9.00 646.82
93+62.1	9.00 647.46	9.00 646.84
93+86.1	9.00 647.85	9.00 646.87
94+10.1	9.00 648.23	9.00 646.89
94+34.1	9.00 647.90	9.00 646.92
94+58.1	9.00 647.56	9.00 646.94
94+82.1	9.00 647.26	9.00 646.97
95+06.1	9.00 646.99	9.00 646.99

B.M. Sta. 93+90
Spine in Maple L
Elev. 648.65



At Sta. 101+87.95 Set I.P. on P.I.
In field Approx. 8' from Fence
Tel. Pole S.E. 41.3' Elec. Pole S 32.5'
 $\Delta = 45^\circ - 20' R$

At Sta. 114+29.70 Set I.P. on P.I.
About 8' back of Right Fence
Fence Post N.W. 8.9' Elec. Pole N 88.0'
Anchor Post by Gate S. 64.5'
 $\Delta = 18^\circ - 29' L$

At Sta. 117+83.15 Set I.P. on P.I.
Near Road L. Oak W 45.0'
Elec. Pole N.E. 33.1' Anchor P.N.W. 31.9'
 $\Delta = 12^\circ - 48' R$

At Sta. 124+40.25 Set I.P. on P.I.
Anchor Post N.W. 103' Tree E 18.4'
Tel. Pole N 171.1' Tree S.E. 34.5'
 $\Delta = 8^\circ - 0' R$

ICH.515 SEC.C
SANDUSKY COUNTY

18

Curve Data:
 $D = 4^\circ$
 $T = 233.12$
 $L = 462.08$
 $R = 18^\circ$

Curve Data:
 $D = 16^\circ$
 $T = 40.3$
 $L = 80.0$
 $R = 2^\circ$

Curve Data:
 $D = 4^\circ$
 $T = 100.20$
 $L = 200.0$
 $R = 3.5^\circ$

Station	Left	Right
100+17.71	4.00 646.10	0.00 646.10
100+42.71	4.00 646.32	4.00 646.11
100+67.71	4.00 646.54	4.00 645.85
100+92.71	4.00 646.76	4.00 645.61
101+17.71	4.00 646.98	4.00 645.35
101+42.71	4.00 647.20	4.00 645.03
101+67.71	4.00 647.42	4.00 644.71
101+92.71	4.00 647.64	4.00 644.39
102+17.71	4.00 647.86	4.00 644.07
102+42.71	4.00 648.08	4.00 643.75
102+67.71	4.00 648.30	4.00 643.43
102+92.71	4.00 648.52	4.00 643.11
103+17.71	4.00 648.74	4.00 642.79
103+42.71	4.00 648.96	4.00 642.47
103+67.71	4.00 649.18	4.00 642.15
103+92.71	4.00 649.40	4.00 641.83
104+17.71	4.00 649.62	4.00 641.51
104+42.71	4.00 649.84	4.00 641.19
104+67.71	4.00 650.06	4.00 640.87
104+92.71	4.00 650.28	4.00 640.55
105+17.71	4.00 650.50	4.00 640.23
105+42.71	4.00 650.72	4.00 640.00
105+67.71	4.00 650.94	4.00 639.78
105+92.71	4.00 651.16	4.00 639.56
106+17.71	4.00 651.38	4.00 639.34
106+42.71	4.00 651.60	4.00 639.12
106+67.71	4.00 651.82	4.00 638.90
106+92.71	4.00 652.04	4.00 638.68
107+17.71	4.00 652.26	4.00 638.46
107+42.71	4.00 652.48	4.00 638.24
107+67.71	4.00 652.70	4.00 638.02
107+92.71	4.00 652.92	4.00 637.80
108+17.71	4.00 653.14	4.00 637.58
108+42.71	4.00 653.36	4.00 637.36
108+67.71	4.00 653.58	4.00 637.14
108+92.71	4.00 653.80	4.00 636.92
109+17.71	4.00 654.02	4.00 636.70
109+42.71	4.00 654.24	4.00 636.48
109+67.71	4.00 654.46	4.00 636.26
109+92.71	4.00 654.68	4.00 636.04
110+17.71	4.00 654.90	4.00 635.82
110+42.71	4.00 655.12	4.00 635.60
110+67.71	4.00 655.34	4.00 635.38
110+92.71	4.00 655.56	4.00 635.16
111+17.71	4.00 655.78	4.00 634.94
111+42.71	4.00 656.00	4.00 634.72
111+67.71	4.00 656.22	4.00 634.50
111+92.71	4.00 656.44	4.00 634.28
112+17.71	4.00 656.66	4.00 634.06
112+42.71	4.00 656.88	4.00 633.84
112+67.71	4.00 657.10	4.00 633.62
112+92.71	4.00 657.32	4.00 633.40
113+17.71	4.00 657.54	4.00 633.18
113+42.71	4.00 657.76	4.00 632.96
113+67.71	4.00 657.98	4.00 632.74
113+92.71	4.00 658.20	4.00 632.52
114+17.71	4.00 658.42	4.00 632.30
114+42.71	4.00 658.64	4.00 632.08
114+67.71	4.00 658.86	4.00 631.86
114+92.71	4.00 659.08	4.00 631.64
115+17.71	4.00 659.30	4.00 631.42
115+42.71	4.00 659.52	4.00 631.20
115+67.71	4.00 659.74	4.00 630.98
115+92.71	4.00 659.96	4.00 630.76
116+17.71	4.00 660.18	4.00 630.54
116+42.71	4.00 660.40	4.00 630.32
116+67.71	4.00 660.62	4.00 630.10
116+92.71	4.00 660.84	4.00 629.88
117+17.71	4.00 661.06	4.00 629.66
117+42.71	4.00 661.28	4.00 629.44
117+67.71	4.00 661.50	4.00 629.22
117+92.71	4.00 661.72	4.00 629.00
118+17.71	4.00 661.94	4.00 628.78
118+42.71	4.00 662.16	4.00 628.56
118+67.71	4.00 662.38	4.00 628.34
118+92.71	4.00 662.60	4.00 628.12
119+17.71	4.00 662.82	4.00 627.90
119+42.71	4.00 663.04	4.00 627.68
119+67.71	4.00 663.26	4.00 627.46
119+92.71	4.00 663.48	4.00 627.24
120+17.71	4.00 663.70	4.00 627.02
120+42.71	4.00 663.92	4.00 626.80
120+67.71	4.00 664.14	4.00 626.58
120+92.71	4.00 664.36	4.00 626.36
121+17.71	4.00 664.58	4.00 626.14
121+42.71	4.00 664.80	4.00 625.92
121+67.71	4.00 665.02	4.00 625.70
121+92.71	4.00 665.24	4.00 625.48
122+17.71	4.00 665.46	4.00 625.26
122+42.71	4.00 665.68	4.00 625.04
122+67.71	4.00 665.90	4.00 624.82
122+92.71	4.00 666.12	4.00 624.60
123+17.71	4.00 666.34	4.00 624.38
123+42.71	4.00 666.56	4.00 624.16
123+67.71	4.00 666.78	4.00 623.94
123+92.71	4.00 667.00	4.00 623.72
124+17.71	4.00 667.22	4.00 623.50
124+42.71	4.00 667.44	4.00 623.28
124+67.71	4.00 667.66	4.00 623.06
124+92.71	4.00 667.88	4.00 622.84
125+17.71	4.00 668.10	4.00 622.62
125+42.71	4.00 668.32	4.00 622.40
125+67.71	4.00 668.54	4.00 622.18
125+92.71	4.00 668.76	4.00 621.96
126+17.71	4.00 668.98	4.00 621.74
126+42.71	4.00 669.20	4.00 621.52
126+67.71	4.00 669.42	4.00 621.30
126+92.71	4.00 669.64	4.00 621.08
127+17.71	4.00 669.86	4.00 620.86
127+42.71	4.00 670.08	4.00 620.64
127+67.71	4.00 670.30	4.00 620.42
127+92.71	4.00 670.52	4.00 620.20
128+17.71	4.00 670.74	4.00 620.00
128+42.71	4.00 670.96	4.00 619.80
128+67.71	4.00 671.18	4.00 619.60
128+92.71	4.00 671.40	4.00 619.40
129+17.71	4.00 671.62	4.00 619.20
129+42.71	4.00 671.84	4.00 619.00
129+67.71	4.00 672.06	4.00 618.80
129+92.71	4.00 672.28	4.00 618.60
130+17.71	4.00 672.50	4.00 618.40
130+42.71	4.00 672.72	4.00 618.20
130+67.71	4.00 672.94	4.00 618.00
130+92.71	4.00 673.16	4.00 617.80
131+17.71	4.00 673.38	4.00 617.60
131+42.71	4.00 673.60	4.00 617.40
131+67.71	4.00 673.82	4.00 617.20
131+92.71	4.00 674.04	4.00 617.00
132+17.71	4.00 674.26	4.00 616.80
132+42.71	4.00 674.48	4.00 616.60
132+67.71	4.00 674.70	4.00 616.40
132+92.71	4.00 674.92	4.00 616.20
133+17.71	4.00 675.14	4.00 616.00
133+42.71	4.00 675.36	4.00 615.80
133+67.71	4.00 675.58	4.00 615.60
133+92.71	4.00 675.80	4.00 615.40
134+17.71	4.00 676.02	4.00 615.20
134+42.71	4.00 676.24	4.00 615.00
134+67.71	4.00 676.46	4.00 614.80
134+92.71	4.00 676.68	4.00 614.60
135+17.71	4.00 676.90	4.00 614.40
135+42.71	4.00 677.12	4.00 614.20
135+67.71	4.00 677.34	4.00 614.00
135+92.71	4.00 677.56	4.00 613.80
136+17.71	4.00 677.78	4.00 613.60
136+42.71	4.00 678.00	4.00 613.40
136+67.71	4.00 678.22	4.00 613.20
136+92.71	4.00 678.44	4.00 613.00
137+17.71	4.00 678.66	4.00 612.80
137+42.71	4.00 678.88	4.00 612.60
137+67.71	4.00 679.10	4.00 612.40
137+92.71	4.00 679.32	4.00 612.20
138+17.71	4.00 679.54	4.00 612.00
138+42.71	4.00 679.76	4.00 611.80
138+67.71	4.00 679.98	4.00 611.60
138+92.71	4.00 680.20	4.00 611.40
139+17.71	4.00 680.42	4.00 611.20
139+42.71	4.00 680.64	4.00 611.00
139+67.71	4.00 680.86	4.00 610.80
139+92.71	4.00 681.08	4.00 610.60
140+17.71	4.00 681.30	4.00 610.40
140+42.71	4.00 681.52	4.00 610.20
140+67.71	4.00 681.74	4.00 610.00
140+92.71	4.00 681.96	4.00 609.80
141+17.71	4.00 682.18	4.00 609.60
141+42.71	4.00 682.40	4.00 609.40
141+67.71	4.00 682.62	4.00 609.20
141+92.71	4.00 682.84	4.00 609.00
142+17.71	4.00 683.06	4.00 608.80
142+42.71	4.00 683.28	4.00 608.60
142+67.71	4.00 683.50	4.00 608.40
142+92.71	4.00 683.72	4.00 608.20
143+17.71	4.00 683.94	4.00 608.00
143+42.71	4.00 684.16	4.00 607.80
143+67.71	4.00 684.38	4.00 607.60
143+92.71	4.00 684.60	4.00 607.40
144+17.71	4.00 684.82	4.00 607.20
144+42.71	4.00 685.04	4.00 607.00
144+67.71	4.00 685.26	4.00 606.80
144+92.71	4.00 685.48	4.00 606.60
145+17.71	4.00 685.70	4.00 606.40
145+42.71	4.00 685.92	4.00 606.20
145+67.71	4.00 686.14	4.00 606.00
145+92.71	4.00 686.36	4.00 605.80
146+17.71	4.00 686.58	4.00 605.60
146+42.71	4.00 686.80	4.00 605.40
146+67.71	4.00 687.02	4.00 605.20
146+92.71	4.00 687.24	4.00 605.00
147+17.71	4.00 687.46	4.00 604.80
147+42.71	4.00 687.68	4.00 604.60
147+67.71	4.00 687.90	4.00 604.40
147+92.71	4.00 688.12	4.00 604.20
148+17.71	4.00 688.34	4.00 604.00
148+42.71	4.00 688.56	4.00 603.80
148+67.71	4.00 688.78	4.00 603.60
148+92.71	4.00 689.00	4.00 603.40
149+17.71	4.00 689.22	4.00 603.20
149+42.71	4.00 689.44	4.00 603.00
149+67.71	4.00 689.66	4.00 602.80
149+92.71	4.00 689.88	4.00 602.60
150+17.71	4.00 690.10	4.00 602.40
150+42.71	4.00 690.32	4.00 602.20
150+67.71	4.00 690.54	4.00 602.00
150+92.71	4.00 690.76	4.00 601.80
151+17.71	4.00 690.98	4.00 601.60
151+42.71	4.00 691.20	4.00 601.40
151+67.71	4.00 691.42	4.00 601.20
151+92.71	4.00 691.64	4.00 601.00
152+17.71	4.00 691.86	4.00 600.80
152+42.71	4.00 692.08	4.00 600.60
152+67.71	4.00 692.30	4.00 600.40
152+92.71	4.00 692.52	4.00 600.20
153+17.71	4.00 692.74	4.00 600.00
153+42.71	4.00 692.96	4.00 599.80
153+67.71	4.00 693.18	4.00 599.60
153+92.71	4.00 693.40	4.00 599.40
154+17.71	4.00 693.62	4.00 599.20
154+42.71	4.00 693.84	4.00 599.00
154+67.71	4.00 694.06	4.00 598.80
154+92.71	4.00 694.28	4.00 598.60

At Sta. 128+62.75 Set IP on P.I.
Elec Pole E 188' Fence Post NW 211
Set Stake 4' 0" L Δ = 20° 30' R

At Sta. 133+21.60 Set IP on P.I.
Maple N 41.2' Maple S 62.2'
Elec. Pole SE 53.5 Δ = 19° 40' R

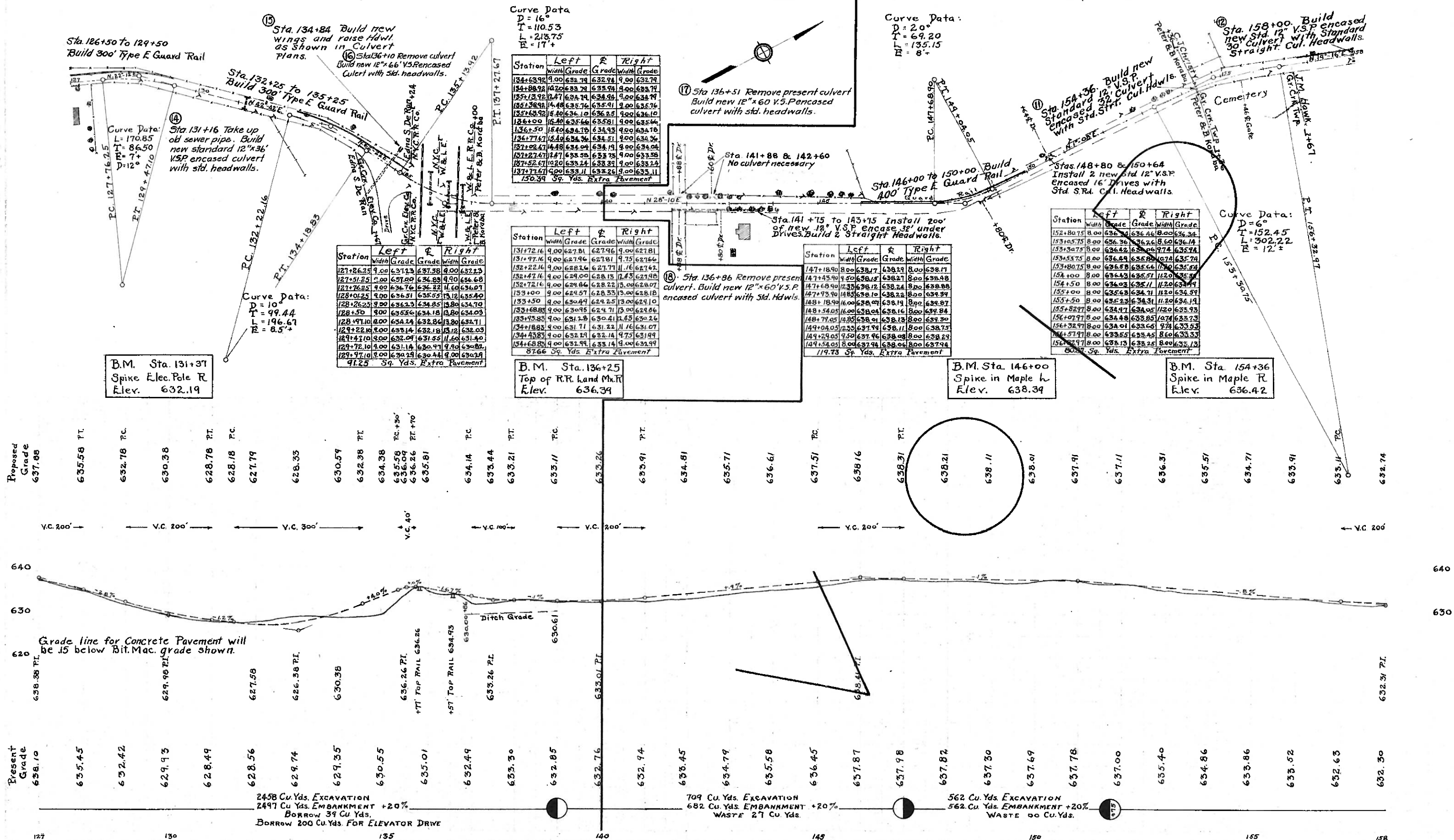
At Sta. 136+30.45 Set I.P.
On P.I. between tracks
Guy Pole E 2.3' Elec PW 29.0'
L.S. & M.S. Land Line MK 2.9.0'
Δ = 34° 12' L

At Sta. 148+38.1 Set I.P. on P.I.
Elec. Pole NW 24.35' Fence Post S 55.0'
Guard Rail Post W. 25.0' Δ = 27° 02' L

At Sta. 154+83.2 Set I.P. on P.I.
By Cemetery. Elec Pole N 49.0'
Anchor Post S 43.6'
Steel Post Opp. Rosa G. Baskie MK 308'
Maple SE 52.7' Δ = 18° 08' R

I.C.H. 515 SEC. C
SANDUSKY COUNTY

7
18



At Sta. 145+00 Set I.P. on P.I. in Roadway
 $\Delta = 4^\circ 40' R$
 Center of Maple S.W. 250' Center of Maple N.W. 295'

At Sta. 155+16.5 Set I.P. on P.I. on Property Line
 $\Delta = 24^\circ 46' L$
 Elm S.E. 14.3' Elm S.W. 30.3 Fence Post S 5.5'

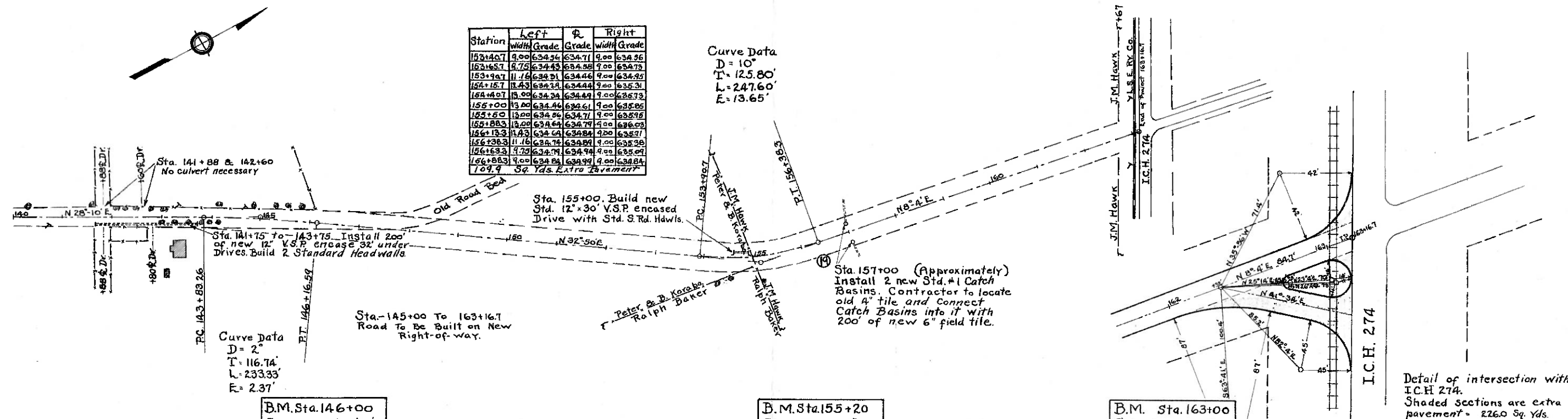
At Sta. 163+16.7 Set I.P. on R. at edge of Curb

I.C.H. 515 SEC. C
 SANDUSKY COUNTY

18

Station	Left	Right
	Width	Width
153+40.7	9.00	634.56
153+65.7	8.75	634.43
153+90.7	11.16	634.31
154+15.7	11.43	634.21
154+40.7	13.00	634.34
155+00	13.00	634.46
155+60	13.00	634.06
156+00	13.00	634.64
156+13.3	11.43	634.64
156+38.3	11.16	634.74
156+63.3	9.75	634.74
156+88.3	9.00	634.84
159.9	Sq. Yds. Extra Pavement	

Curve Data
 $D = 10^\circ$
 $T = 125.80'$
 $L = 247.60'$
 $E = 13.65'$



B.M. Sta. 146+00
 Spike in Maple L.
 Elev. 638.39

B.M. Sta. 155+20
 Spike in Oak E.
 Elev. 634.44

B.M. Sta. 163+00
 Spike in L.S.E. pole E.
 Elev. 633.80

Detail of intersection with
 I.C.H. 274.
 Shaded sections are extra
 pavement - 2260 Sq. Yds.

